



global solutions :
local support™

Parabolic Dish Antenna 3300 - 3600MHz Operation

The parabolic dish antenna systems offered by Laird Technologies are constructed of an aluminum alloy dish with powder coat paint finish for excellent mechanical, electrical and environmental performance. The parabolic reflector is made with a special one-step molding technology which achieves excellent consistency and long term stability. They come complete with universal galvanized steel, powder coat paint mounting system for pole mount applications. Because of its' superb electrical performance and mechanical stability, the parabolic dish antenna can be used in a wide variety of high performance 3.5GHz wireless applications. An optional fiberglass radome is available for added environmental protection and reduced wind loading.

Features and Benefits:

- High gain: choice of 25dBi or 28dBi antenna
- Adjustable tilt pole mount
- Vertical or horizontal polarization
- Type N female connector
- DC grounded for lightning protection
- Rugged, lightweight and waterproof

Applications

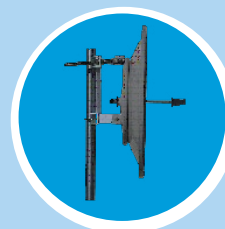
- 3.5 GHz wireless local loop
- Long distance backhaul data links
- Point to point data links
- Building to building high speed links
- Wimax backhaul

For sales information:

Telephone 800-323-3757

E-Mail sales@pacwireless.com

or visit: www.pacwireless.com



Specifications

Parameter	Model	Min	Typ	Max	Units
Frequency Range	DA35	3300		3600	MHz
Gain	DA3x-25 DA3x-28		25 28		dBi
VSWR			1.5:1		
3db Beam Angle	DA3x-25 DA3x-28		10 7.5		Deg
Cross Pole	DA3x-25 DA3x-28	28 30			dB
Front to Back	DA3x-25 DA3x-28	32 35			dB
Side Lobe	DA3x-25 DA3x-28		-20 -25		dB
Impedance			50		OHM
Input Power				100	W
Pole Diameter (OD)		1.5 (38)		3.0 (76)	Inch (mm)
Operating Temperature		-40		+70	Deg C
Rated Wind Velocity				125	mph
Weight	DA3x-25 DA3x-28		11 (5) 22 (10)		Lbs (Kg)
Dimensions (Dia)	DA3x-25 DA3x-28		25.5 (648) 35.4 (900)		Inch (mm)

Wind Loading (Lbs)

Model	100MPH	125MPH
DA3x-25	113	177
DA3x-25 with Radome	75	116
DA3x-28	256	400
DA3x-28 with Radome	111	173

System Ordering:

DA35-25	25dBi 3300MHz to 3600MHz parabolic dish antenna
DA35-28	28dBi 3300MHz to 3600MHz parabolic dish antenna
DA5-29 RADOME	Radome kit for DA3x-25 dish
DA5-32 RADOME	Radome kit for DA3x-28 dish

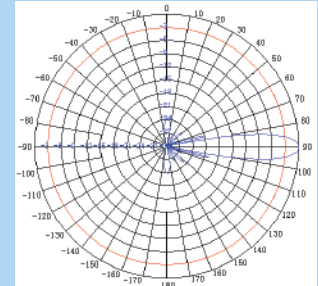
Notes:

- All shipments F.O.B. Schaumburg, IL 60173
- All antennas carry a 2 Year Warranty

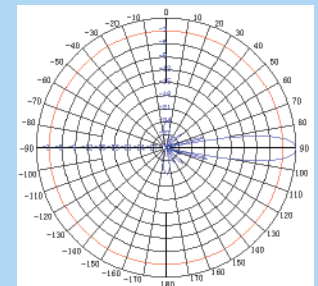
Any information furnished by Laird Technologies and its agents is believed to be accurate and reliable. Responsibility for the use and application of Laird Technologies materials rests with the end user since Laird Technologies and its agents cannot be aware of all potential uses. Laird Technologies makes no warranties as to the fitness, merchantability, or suitability of any Laird Technologies materials or products for any specific or general uses. Laird Technologies shall not be liable for incidental or consequential damages of any kind. All Laird Technologies products are sold pursuant to the Laird Technologies domestic terms and conditions of sale in effect from time to time, a copy of which will be furnished upon request.

Specifications subject to change without notice.

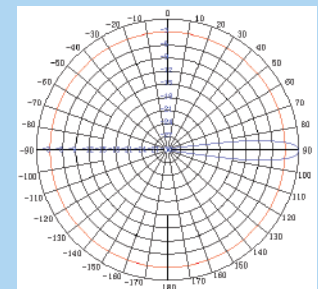
Antenna Patterns



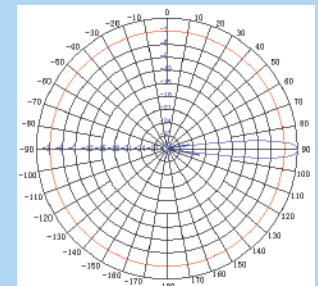
E Plane (Vert) DA35-25



H Plane (Horiz) DA35-25



E Plane (Vert) DA35-28



H Plane (Horiz) DA35-28